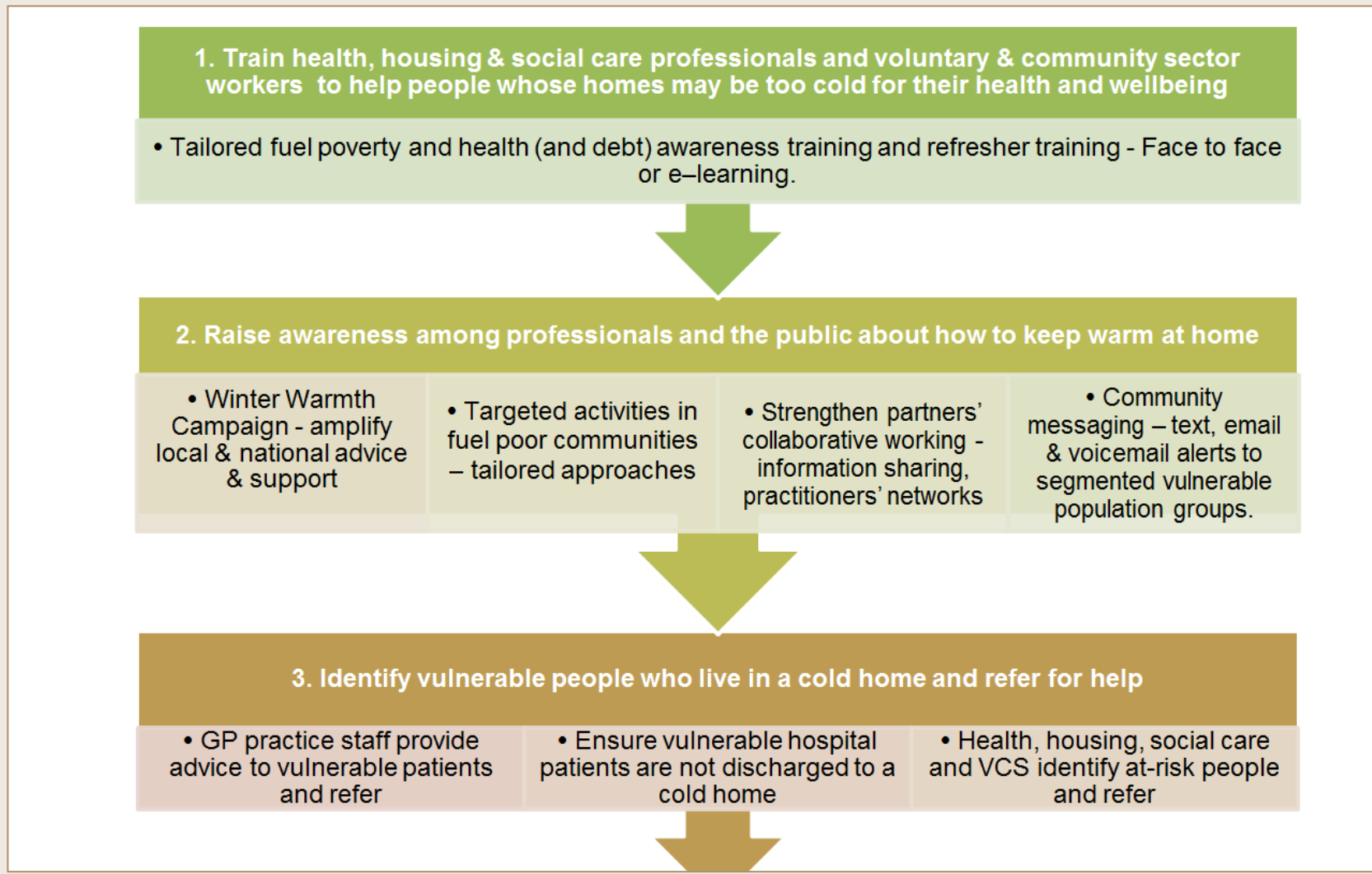


EAST SUSSEX FUEL POVERTY REDUCTION PROGRAMME

Activity update for Rother Local Strategic Partnership
14th June 2017



East Sussex fuel poverty reduction pathway





keep warm and well

...in East Sussex

4. Single-point-of-contact health and housing referral service for vulnerable people living in cold homes

Provide tailored solutions which take into account individual needs and enables access to interventions. Carry out follow-up to find out whether needs have been met and that individuals are no longer vulnerable to the health problems associated with a cold home.

4. Provide vulnerable people with information and advice in order to maximise income

- Money advice services: CABs & Welfare Benefits Helpline
- Emergency cold home fuel payments
- Energy Switching – Big Energy Saving Network & collective switching

5. Provide access to housing insulation and heating, more affordable fuel options and how to avoid the health risks of cold homes

- **Winter Home Check Service** offers the most vulnerable people in East Sussex a full assessment of their home and how best to keep it warm; small preventative works, such as improving insulation or repairing boilers; installation of replacement boilers, central heating systems or home insulation, emergency temporary heating, and; advice on getting help with the cost of heating the home.

6. Other national and local measures

- **National** – Cold Weather Payment, the Warm Home Discount, Winter Fuel payment, Energy Saving Trust etc.
- **Local** – Your Energy Sussex, Green Deal and renewables, supported by District and Borough Council projects.



keep warm and well

...in East Sussex

Delivered for Rother

Training/Awareness activity covering Rother

1st April 2016- 31st March 2017

NEA CPD Training in Rother (1 half-day session – AM)	16
Bexhill Caring Community	4
Joint Community Re-ablement Team	15
Health and Social Care Connect (HSCC) and ESCC	42
Joint Community Re-ablement Team. Hastings & Rother.	15
Adult Social Care training	20
MECC Bexhill hospital	19
Homeworks	25
Osborne Assessors training	7
Floating Support - Homeworks Staff Training	22
Adult Social Care - Financial Services	20
Steps East	15
East Sussex Fire & Rescue Service “well being”	18
ESFR Healthy Homes Programme Training	14
Total	252

Get advice and support to help keep you and your home warm. Call 0800 085 1674.





keep warm and well

...in East Sussex

East Sussex Winter Home Check service Delivered in Rother :

Major Measures : 1st April 2016- 31st March 2017	No.
New central heating system	3
Replacement boiler	20
Storage heaters	2
Total	25
Other:	No.
Energy Advice	86
Fuel switching advice	85
Minor Measures : 1st April 2016- 31st March 2017	
Households receiving 1-2 measures	78
Households receiving 3 -4 measures	10
Households receiving 5 or more measures	4
Total	92



Look after yourself and check on older neighbours or relatives to make sure they are safe, warm and well.

Referrals: 1st April 2016 – 31st March 2017

	Apr-16 to March-17			Difference in activity vs 'need'	
	No.	%	Valid %	District/ borough's percentage share of households in target LSOAs	
Eastbourne	160	18%	19%	18%	1%
Hastings	361	40%	42%	43%	-1%
Lewes	90	10%	10%	10%	0%
Rother	146	16%	17%	19%	-2%
Wealden	106	12%	12%	10%	2%
Out of area	30	3%			
TOTAL	893	100%			



Key referral partners

1st April 2016 – 31st March 2017

East Sussex County Council (inc. Adult Social Care & Health)	30
East Sussex Fire & Rescue Service	6
Home Works	132
Rother District Council	5
Sussex Community Development Association	3
Self-referral	229
All other organisations on the attendee list	0

Referrals for WHCs in all areas of East Sussex





keep warm and well

...in East Sussex

Contact details

East Sussex Winter Home Check Service

www.winterhomecheck.com

0800 085 1674

Further information is available at:

www.eastsussex.gov.uk/keepwarm



Being cold isn't just uncomfortable; it can be very bad for your health particularly if you are an older person, disabled, have a family with young children or have a long-term limiting illness.

David Bishop

Health Improvement Principal Public Health,
East Sussex County Council

david.bishop@eastsussex.gov.uk

01273 336228

Marie Jones

East Sussex Fuel Poverty Coordinator
Hastings Borough Council

mjones@hastings.gov.uk

01424 451320 / 07885233478